



enquiries@cedstone.co.uk

Call us: +44(0) 203 960 2027

www.cedstone.co.uk

# Inverness Campus / Làrach Inbhir Nis

Case Study

Contractor: **Morgan Sindall Group**

Architect: **HarrisonStevens**



Thanks to a newly built communal space, the Inverness Campus is now significantly contributing to the national economy in Scotland, with the facility officially marking Inverness as a city.

A modern space for learning, leisure and commerce, the two campus spaces are made up of a multitude of different granites and paving patterns.

Edinburgh-based Architects Harrison Stevens wanted the campus to be a vibrant and engaging landscape in which to reside, to work, to socialise, to recreate and to connect communities'.



## Materials Supplied:

*Bespoke Granite Seating, Kerbs and Steps*

*Mixed Granite Setts*

*Granite Corduroy Paving*

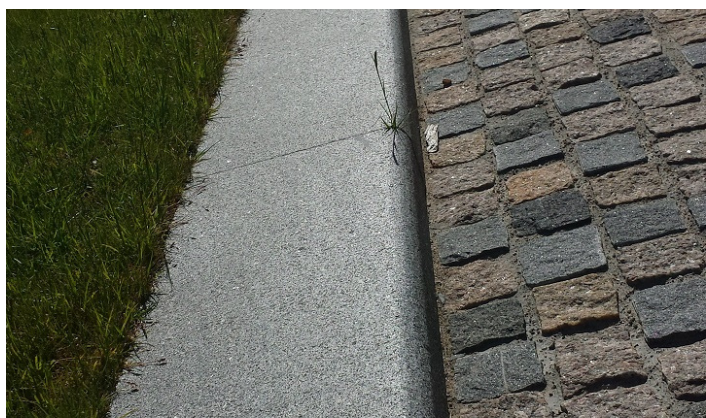


Suitable for traffic and a heavy flow of pedestrians, the different paving materials help to distinguish multiple paths, roads and communal spaces whilst maintaining a contemporary and engaging look.

Wide-open spaces paved in a traditional fan pattern with split Chinese Granite setts in yellows, greens, mid-greys, pinks and blacks makes this a truly unique scheme.



Great care was taken over the detailing, and the bespoke design draws on interpretations of the surrounding highland landscape so local materials were still used throughout where possible.



Bespoke sloping Silver Grey Granite kerbs crafted in accordance with the Architect's unique designs help to control the speed of traffic, with the multifunctional use of a border for green planting.

Bespoke seating blocks offer more solitary resting spaces across the campus. Silver Grey Granite special setts were also used for mixed purposes throughout the project, along with both straight and radius kerbs and channels in White, Blue-Grey and Silver Grey Granite.



Silver Grey Granite corduroy pavers indicate potential hazards for pedestrians at the top of the steps.

A circle of thicker roadway setts in yellows, greens, mid-greys, pinks and blacks surround a nearby roundabout as you come off the main road into the campus, helping to guide traffic and signify a new road zone whilst continuing the style throughout the scheme.

