

FITTING GUIDELINES

TIER®
Panel System

Natural Stone **Made Simple**

1. Preparation

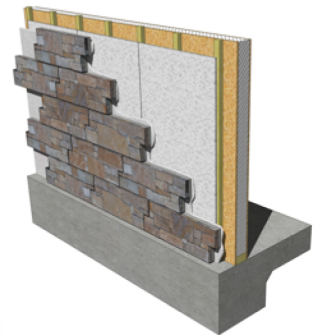
1.1 Whether fitting TIER® Panels to standard Blockwork or TIER® Building Board it is essential that all surfaces are clean and free from dirt and cement. Do not fit to a plastered wall.

1.2 Check the height of the area to be clad, as its best practice to have any horizontal cuts below ground level where possible, so therefore measure the height required and then divide the height of the wall by the height of one panel, once you know how many rows are needed, multiply the number of rows by the height of one panel to get the position for the first row. Then temporarily fix a wooden lathe to the bottom as a starting guide leaving the correct distance for full panels to be fitted right to the top with no cuts.

2. Materials / Tools

2.1 Using TIER® Flexible Adhesive, added to clean water and mixed with a suitable forced action mixer or slow speed drill and paddle until a slump free mortar is produced approx. 5 L water / 20 kg adhesive. The mixed adhesive is usable for up to 5 hours depending on site temperature and conditions. Do not add extra water as this will cause a loss in performance.

2.2 Where necessary a rubber mallet may be used to tap the Panels or Quoins into place, do not use a Club Hammer as this will damage the material. Make sure to keep each row level and the joints clean.



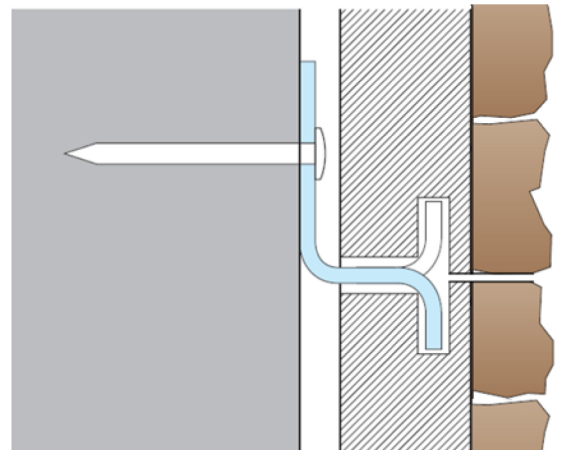
FITTING GUIDELINES

TIER®
Panel System

Natural Stone **Made Simple**

3. Installation

- 3.1 The mixed adhesive should be applied to dry areas using a notched trowel and applied by solid bed on wet areas. Panels should be placed with a firm twisting action before the adhesive has skinned over, i.e. within the open time.
- 3.2 Do not 'Dot and Dab' as this is not a recommended method of application.
- 3.3 Cement based products will take longer to harden and set at lower temperatures and should not be used below 5°C. As explained do not 'Dot and Dab' but rather "butter" the back of each Panel and Quoin using a small trowel to ensure maximum coverage of the adhesive. (insufficient coverage can cause air pockets and weakness where the adhesive is not properly applied)
- 3.4 When placing the Panels or Quoins to the wall make sure that all joints are kept clean and free from Adhesive as this will only highlight the joints.
- 3.5 If required use a rubber mallet to tap the Panels or Quoins into the adhesive making sure they are completely bedded in all areas.



4. Fixings

- 4.1 Where fixings are required, TIER® Fixing System has been developed to ensure a fast and secure solution.
- 4.2 After the Panel or Quoin is fixed to the wall with the Adhesive, mark where you want the fixing to go and then using a 5" Grinder cut a 3 mm slot in the Panel or Quoin to allow the S/S Fixing to slide in, you must recess the Fixing into the Panel as the Panel on top must still fit tight with no joint, mark the hole for the S/S Hammer In fixing, and drill a suitable hole, place the bracket once again into the prepared slot and secure it to the wall using the Hammer In Fixing.

